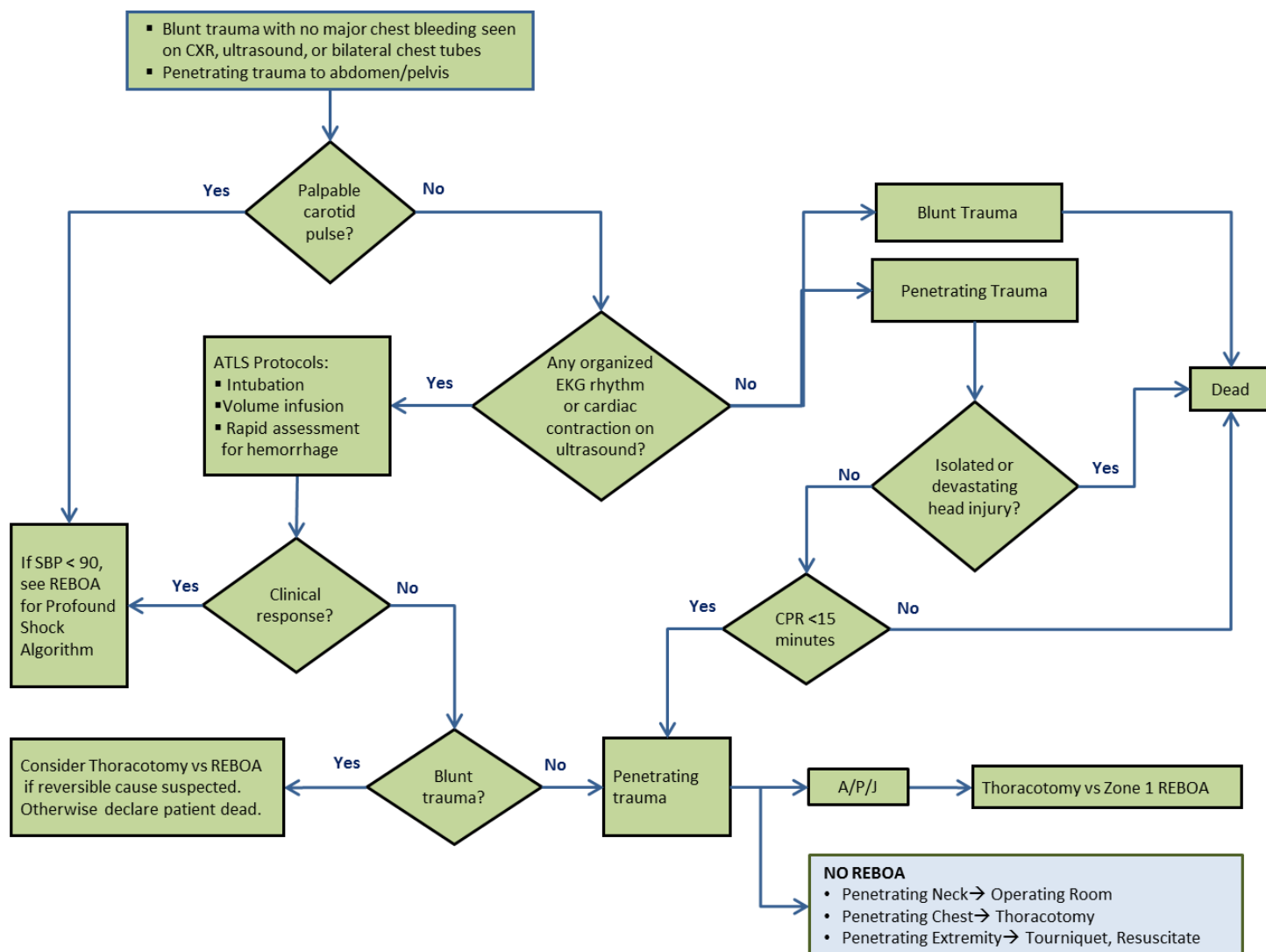


## APPENDIX A: TRAUMATIC ARREST ALGORITHM FOR REBOA



REBOA: Resuscitative Endovascular Balloon Occlusion of the Aorta; CXR: Chest X-Ray; EFAST: Extended Focused Assessment with Sonography for Trauma; ATLS: Advanced Trauma Life Support; EKG: Electrocardiogram; SBP: Systolic Blood Pressure; CPR: Cardiopulmonary Resuscitation; A/P/J: Abdomen/Pelvis/ Junctional Lower Extremity-

Zone I REBOA: placement of aortic balloon in the thoracic aorta (insert catheter to 46 cm or measure the balloon to mid sternum/P-tip to sternal notch)

Zone III REBOA: placement of aortic balloon directly above the aortic bifurcation (insert catheter to 27 cm or measure the balloon to the umbilicus).