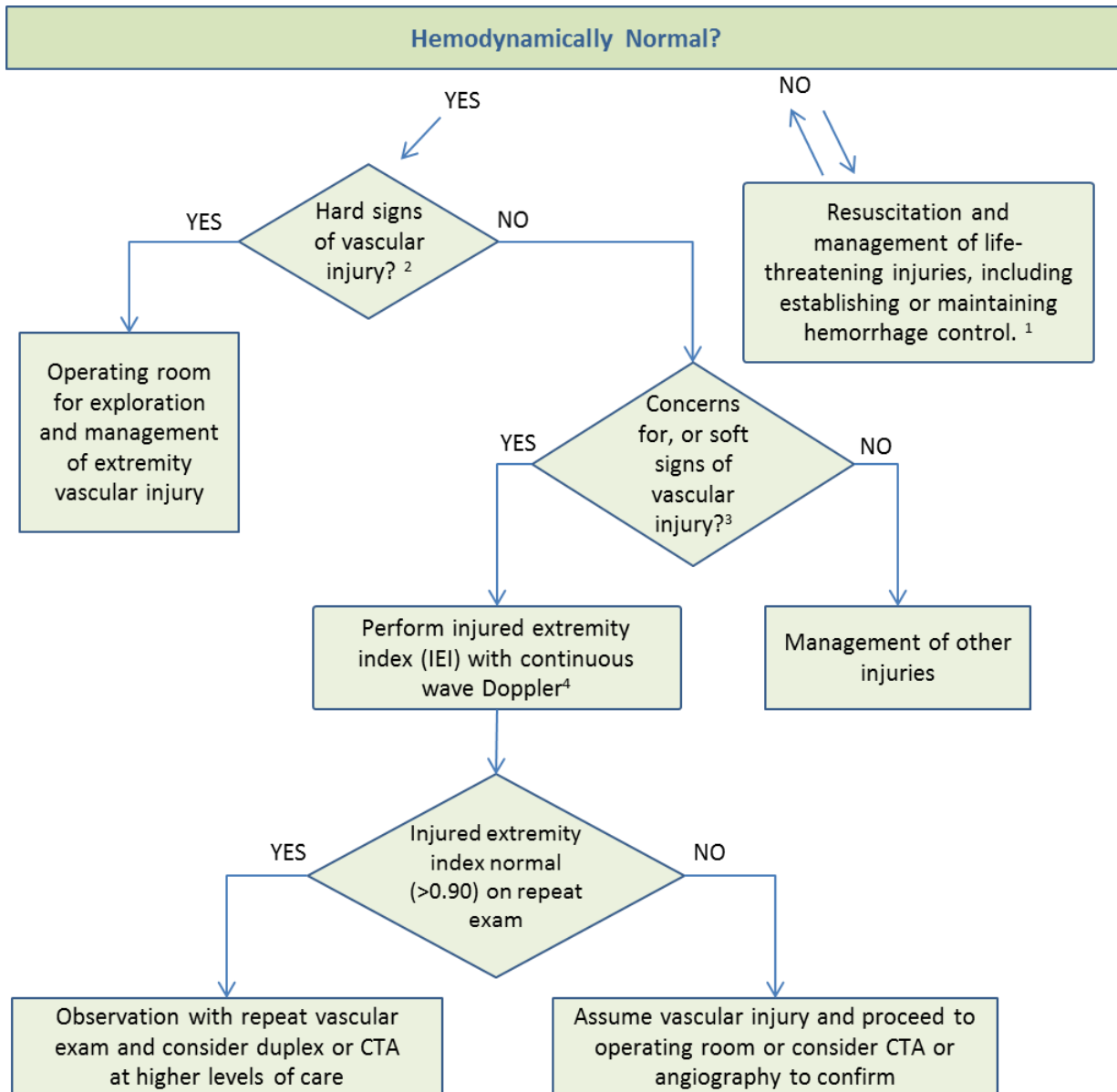


Figure 1. Algorithm for Extremity Vascular Injury



1. Do not release tourniquets or begin vascular injury exploration if patient is in shock from associated injuries
2. Hard signs: hemorrhage, expanding hematoma, absence of Doppler signal on repeated exam, audible bruit, palpable thrill
3. Soft signs: proximity to major vessel, fracture or dislocation patterns, diminished pulse, report of hemorrhage or shock
4. IEI is occlusion pressure of arterial Doppler signal on injured extremity divided by occlusion pressure of normal limb
 - Normal is > 0.90
 - Repeat Doppler exam and IEI during first hours after injury, especially if patient is cold and hypotensive